



Marine D Shape Fender

 **ZHIYOU MARINE**
Marine & Offshore Equipment Supplier

Shanghai Zhiyou Marine & Offshore Equipment Co., Ltd

Web: www.marineoutfittings.com

Email: info@marineoutfittings.com

Tel: +86 21 5645 2367

Brief

Marine D shape fenders are ideal for smaller quays and wharves serving fishing boats, tugboats, barges and other work craft. D shape fenders are also commonly used on pontoons and on inland water ways for lock protection. They provide an excellent barrier against damage from all sizes and shapes of vessels. The flat rear surface of D-shape fender makes them easy to install with a flat bar down the bore.

D fenders are also called extrusion fenders. Extrusion is a manufacturing process involving pushing vulcanized rubber through a special die to form a constant cross-section profile. This is a simple and cost effective production method for smaller fenders and allows sections to be made in very long lengths. Special profiles can also be produced economically to customer's specific requirements.

D-shape fenders can be fitted by means of bolts and or strips in various manners: horizontally, vertically or diagonally. The mounting holes required are made through the side or through the top and bottom of the fender. D-shape fenders can also be produced vulcanized with required radius, which allow them to be fitted properly to a circular bow or stern. D-shape fenders can be provided in specified lengths and the ends can be beveled.

Specification

Available in many sizes from 150×150mm to 500×500mm.

Choice of horizontally, vertically or diagonally installation design.

Material of accessories with hot galvanizing or stainless steel.

Other requirements.

Features

Deal for smaller quays and wharves, also can be used in work boats.

Easy to install with a flat bar down the bore.

Can be supplied in long lengths and be cut to length, angle cut.

Dimensions

The dimensions please see the drawing enclosed. Customized solution or any other requirements please [contact us](#).



Shanghai Zhiyou Marine & Offshore Equipment Co., Ltd

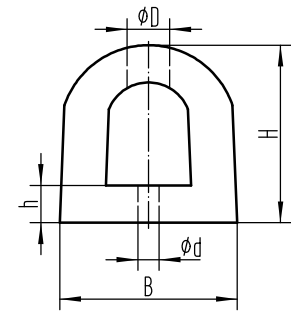
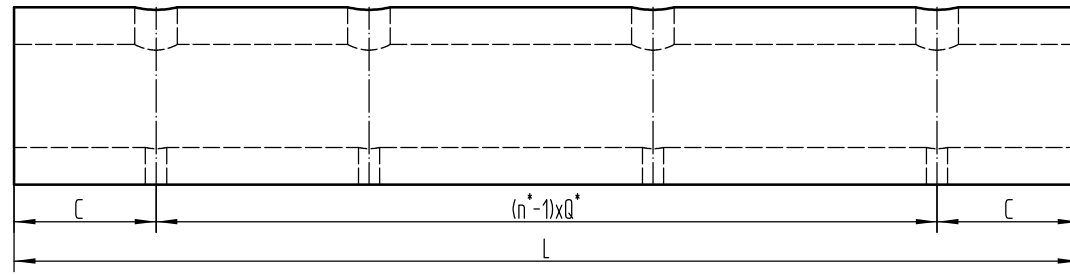
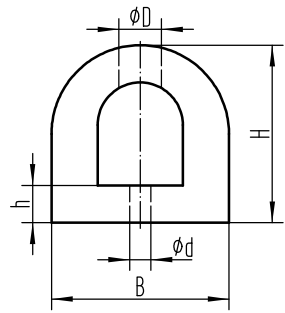
Web: www.marineoutfittings.com

Email: info@marineoutfittings.com


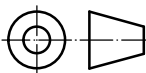
Tel: +86 21 5645 2367

The drawings are for reference only, not used as production drawings. 此圖紙僅供參考，不作為生產圖紙。

Model	H	B	h	L	C	Q	ϕD	ϕd
MDF-150x150	150	150	25	Standard size range is 1000-3000. or customized.	Depend on L.		40	24
MDF-200x200	200	200	35				55	30
MDF-250x250	250	250	35				60	30
MDF-300x300	300	300	40				65	32
MDF-300x360	300	360	40				65	32/40
MDF-400x400	400	400	55				80	32/40
MDF-500x500	500	500	90				97	45



n^* : Quantity of bolt holes.
 Q^* : Distance of adjacent bolt holes.

1		
Rev	Description	Date
Note	All dimensions are in millimeters unless otherwise specified.	
 Shanghai Zhiyou Marine & Offshore Equipment Co., Ltd Room 405, Fudan Software Park, 188 Changyi Road, Shanghai China. Tel: +86-21-5645-2367 Email: sales@zhiyoumarine.com info@marineoutfittings.com Web: www.zhiyoumarine.com www.marineoutfittings.com		
Dwg Name	Marine D Shape Rubber Fender	
	Scale	1:7.5 @A3
	Sheet	1/2
Dwg No.	ZY-MRF-D	-

The drawings are for reference only, not used as production drawings. 此圖紙僅供參考，不作為生產圖紙。